

CUTE AS A BUG CLASS

SUPPLY LIST

Cute as a Bug Suite Collection (167007)

or separately:

Sweet Bugs Bundle (167002)

Sweet Bugs Photopolymer Stamp Set
(166995)

Sweet Bugs Dies (167001)

Cute as a Bug 12" x 12" (30.5 x 30.5 cm)

Designer Series Paper (166994)

Ladybug Garden Epoxy Shapes (167005)

Old Olive $\frac{3}{8}$ " (1 cm) Specialty Rickrack (167006)

Ink & Coloring

Crumb Cake Classic Stampin' Pad™ (147116)

Old Olive Classic Stampin' Pad (147090)

Real Red Classic Stampin' Pad (147084)

Soft Sea Foam Classic Stampin' Pad (147102)

Tuxedo Black Memento™ Ink Pad (132708)

Calypso Coral Stampin' Blends™ (154881)

Crumb Cake Stampin' Blends (154882)

Daffodil Delight Stampin' Blends (154883)

Old Olive Stampin' Blends (154892)

Petal Pink Stampin' Blends (154893)

Petunia Pop Stampin' Blends (163828)

Pool Party Stampin' Blends (154894)

Peach Pie Stampin' Blends (163827)

Smoky Slate Stampin' Blends (154904)

Real Red Stampin' Blends (154899)

Stampin' Blends Color Lifter (144608)

Coloring Tools

Blending Brushes (153611)

Cardstock & Paper

Basic White 8½" x 11" Cardstock (166780)

Basic White 8½" x 11" Thick Cardstock (159229)

Crumb Cake 8½" x 11" Cardstock (120953)

Early Espresso 8½" x 11" Cardstock (119686)

Old Olive 8½" x 11" Cardstock (100702)

Poppy Parade 8½" x 11" Cardstock (119793)

Soft Sea Foam 8½" x 11" Cardstock (146988)

Adhesives

Stampin' Dimensionals™ (104430)

Multipurpose Liquid Glue (110755)

Ribbon & Trim

Linen Thread (104199)

Tools

Forever Plaid 3D Embossing Folder (164049)

Three Banner Punch (167050)

Bone Folder (102300)

Clear Blocks (*as appropriate*)

Grid Paper (130148)

Paper Trimmer (152392)

Stampin' Cut & Emboss Machine (149653)

Take your Pick™ (144107)

Other

Scissors

Single Hole Punch

Stamp Cleaning Supplies

CUTE AS A BUG CLASS

Card 1
5 ½" x 4 ¼"



MEASUREMENTS

Old Olive Cardstock *card base*
11" x 4 ¼", score at 5 ½"

Basic White Cardstock *layer*
5 ¼" x 4" (x 2)

Basic White Cardstock *panels*
3 ⅝" x ¾" (x 5)

Basic White Cardstock *for sentiment*
2" x 4"

Old Olive Cardstock *panels*
3 ¾" x ⅞" (x 5)

INSTRUCTIONS

1. Fold card base in half.
2. Add one of the Basic White Cardstock layers to the front of the card.
3. Stamp the marching ants image and the flower and grass image in the bottom right corner of the second Basic White Cardstock layer using Tuxedo Black Memento Ink.
4. Color the image using Stampin' Blends and add to the inside of the card.
5. Add the 5 Old Olive Cardstock panels to the front of the card.
6. Stamp the images on each Basic White Cardstock panel as shown, using Black Memento Ink.
7. Color the images using Stampin' Blends.
8. Adhere the stamped panels to the Old Olive panels using Multipurpose Liquid Glue.
9. Stamp the sentiment on Basic White Cardstock using Memento Ink. Cut it out using scissors and add to the card front using Stampin' Dimensionals.
10. Complete the card with Ladybug and Dot Epoxy Shapes.

CUTE AS A BUG CLASS

Card 2
5 1/2" x 4 1/4"



MEASUREMENTS

Soft Sea Foam Cardstock card base

11" x 4 1/4", score at 5 1/2" & 2 3/4"

Basic White Cardstock layer; front and inside

4 1/2" x 3 1/8" (x 2)

Basic White Cardstock for sentiment

2 1/2" x 1"

Soft Sea Foam Cardstock layer; front and inside

4 5/8" x 3 1/4" (x 2)

Designer Series Paper back inside panel

5 1/4" x 4"

Designer Series Paper front panel

4" x 2 1/2"

Designer Series Paper for cut elements

Butterflies (x 2), Campfire, Snail with Ladybug, and Bee with Balloon

INSTRUCTIONS

1. Score and fold card base (z-fold).
2. Add the Designer Series Paper layers to the inside and front panels.
3. Add one of the Soft Sea Foam Cardstock layers to the inside of the card and then line up the second panel on the front over the top. Glue this only to the left-hand edge.
4. Add one of the Basic White Cardstock layers to the inside.
5. Cut out and add the Snail with Ladybug and Bee with Balloon to the inside panel as shown.
6. Take the second panel of Basic White Cardstock and add color to the middle section with Soft Sea Foam Classic Stampin' Ink using a Blending Brush.
7. Cut out the Campfire Scene and Butterflies (x 2) from the DSP and add to the front with Stampin' Dimensionals.
8. Stamp the sentiment on the Basic White Cardstock sentiment panel.
9. Stamp the stitching image down the left-hand edge of the sentiment panel in Old Olive Ink to create the stitching effect.

CUTE AS A BUG CLASS

10. Blend the left-hand edge with a touch of Soft Sea Foam Ink using a Blending Brush.
11. Cut a banner edge on the right-hand side with your scissors and add to the front with some Dimensionals.

CUTE AS A BUG CLASS

Card 3
5 ½" x 4 ¼"



MEASUREMENTS

Basic White Thick Cardstock *card base*

11" x 4 ¼", score at 5 ½"

Basic White Cardstock *layer; front panel base*

5" x 2 ¼"

Basic White Cardstock *layer; front panel top*

4 ⅞" x 2 ⅛"

Poppy Parade Cardstock *layer*

5 ¼" x 4"

Designer Series Paper *layer*

4" x 2"

Basic White Cardstock *for die cutting & sentiment*

8 ½" x 5 ½"

Mushroom Stem Large (x 2)

Mushroom Stem Small (x 2)

Large Flower Stem (x 2)

Small Flower Stem (x 2)

Large Flower Top (x 2)

Small Flower Stem (x 2)

Poppy Parade Cardstock *for die cutting*

2" x 4"

Mushroom Top Large (x 2)

Mushroom Top Small (x 2)

INSTRUCTIONS

1. Fold card base in half.
2. Add the Poppy Parade Cardstock layer to the card front.
3. Add the panel of Designer Series Paper layer to the front.
4. Add the larger Basic White Cardstock layer to the middle of the card front.
5. On the smaller Basic White Cardstock layer, stamp the small mushroom on the far left- and right-hand side. Stamp the small flower and grass images next to the mushrooms and then stamp the snowdrops on the right-hand side.
6. Color all of the images with Stampin' Blends.

CUTE AS A BUG CLASS

7. Take the Poppy Parade mushroom tops (x 5) and blend with a touch of Real Red Classic Stampin' Ink on the left-hand side of each piece. Set to one side.
8. Color the flower stems with Old Olive Stampin' Blends. Color the mushroom stems with the light Crumb Cake Stampin' Blend and the Color Lifter. Add a touch of color to the flowers with Petal Pink Stampin' Blends.
9. Add all of the tops of the flowers and mushrooms to the stems with Stampin' Dimensionals.
10. Stamp your sentiment on Basic White Cardstock with Tuxedo Black Memento Ink and cut out. Add this to the front of the panel with Dimensionals.
11. Add the mushrooms and flowers onto the front panel as shown with a touch of glue.
12. Complete the card with Ladybug and Dot Epoxy Shapes.

CUTE AS A BUG CLASS

Picnic Box



MEASUREMENTS

Early Espresso Cardstock box base

10 1/2" x 8 1/4", score at 1 3/4" on each side

Crumb Cake Cardstock box lid

8 5/8" x 6 1/2", score at 13/16" on each side; score at 3 15/16" in from each short side

Crumb Cake Cardstock box handle

11" x 3/4" cut first

Crumb Cake Cardstock embossed panels

4 3/4" x 3" (x 2)

4 3/4" x 5/8" (x 3)

2 7/8" x 5/8" (x 4)

Basic White Cardstock tag layer

3 1/2" x 2"

Basic White Cardstock sentiment

2" x 4"

Designer Series Paper box decoration

2 1/4" x 2 1/4" (x 2) red plaid pattern

Designer Series Paper tag layer

3 1/4" x 2" berries pattern

Designer Series Paper tag layer

3" x 2" red plaid pattern

Designer Series Paper to cut element

Bee

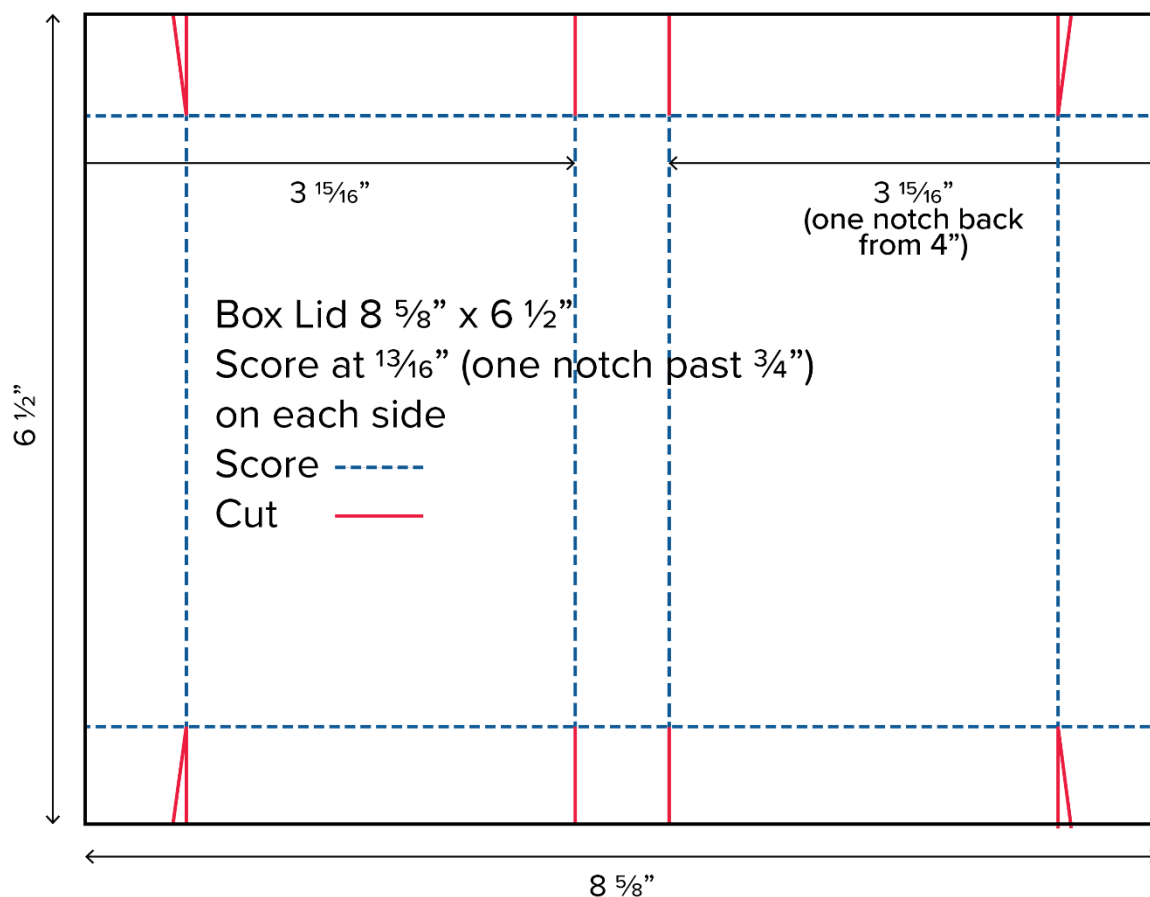
See included diagrams below for scoring clarification

INSTRUCTIONS

1. Score the box base and box lid as shown in the diagrams below. For each of the base and the lid, add Multipurpose Liquid Glue to the tabs at each corner and glue to the box sides to make a tray.
2. Put the lid onto the box and add glue to the tabs in the middle of the lid to attach it to the base.
3. Emboss the Crumb Cake Cardstock panels with the Forever Plaid 3D Embossing Folder. Add some blending of Crumb Cake Classic Stampin' Ink to the edges of the embossed panels with a Blending Brush.
4. Adhere all the panels to the top of the box.

CUTE AS A BUG CLASS

5. Glue the handle to the sides of the box.
6. Cut approx. 26" of Old Olive $\frac{3}{8}$ " (1 cm) Specialty Rickrack and tie around the handle in a bow.
7. Take the two square pieces of Designer Series Paper in the Red Plaid pattern and cut across the diagonal to create 4 triangular pieces. Add these to the edge of the box to create the faux 'tablecloth' peeking out the sides of the box.
8. Take the Basic White Cardstock tag layer. Snip off one corner of the rectangle and then use this to cut the opposite corner to match to create the tag shape. Repeat with both DSP tag pieces so all three match.
9. Stamp the sentiment on Basic White Cardstock and cut out with the Three Banner Punch.
10. Align all your tag layers and your sentiment banner. Punch a hole through the top of all the layers.
11. Using Linen Thread, tie all the tag layers together and tie to the bow of the Old Olive Rickrack.
12. Finish with a Ladybug Epoxy Shape on the edge of the tag.



CUTE AS A BUG CLASS

